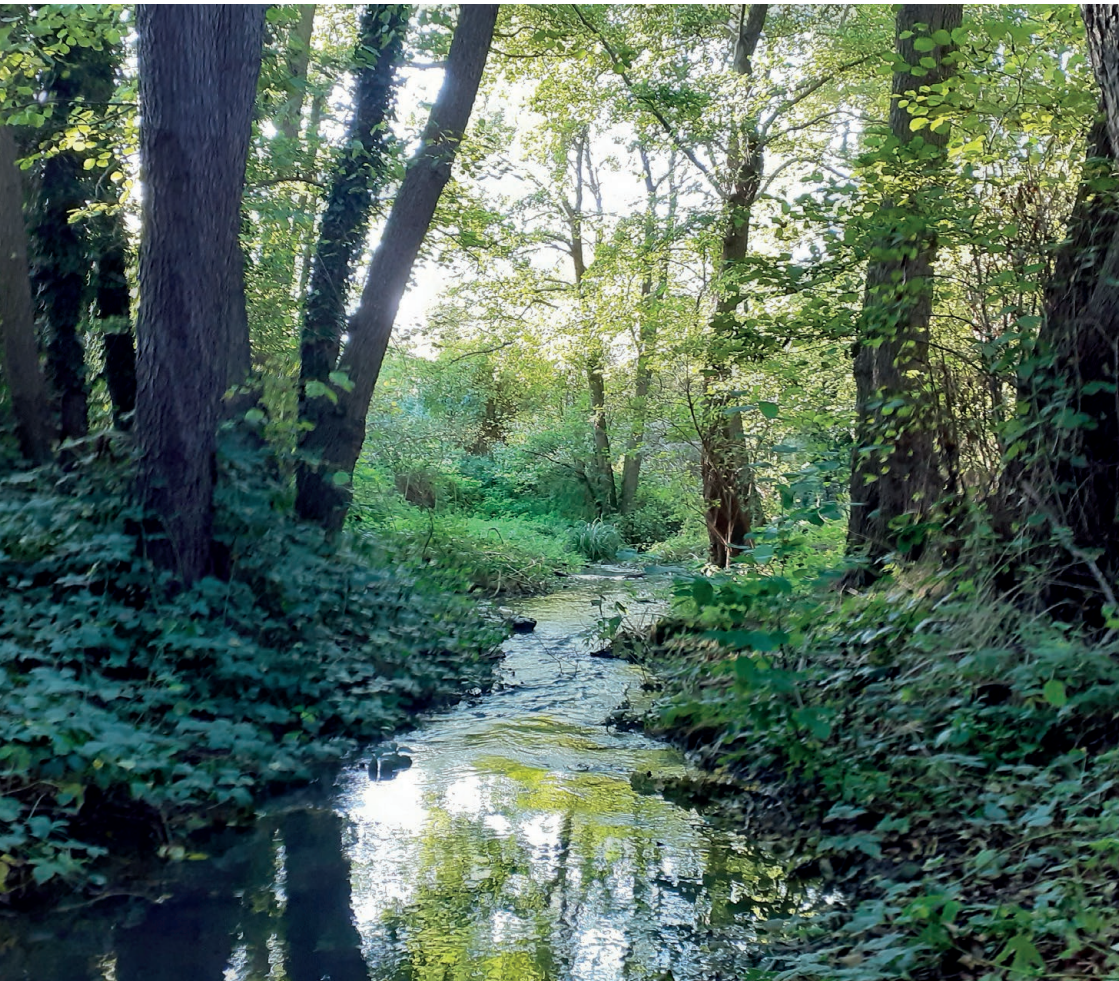




# SCENIC GREEN TRAIL



# Hello!

Welcome to your exclusive guide to walking the Scenic Green Trail, my new long distance path around the Borough of Maidstone.

My trail uses the existing public footpath network and short sections of road to link important nature reserves, green spaces and historic villages together.

As the trail weaves through the landscape, you can enjoy incredible views and a wide variety of habitats from ancient woodland, open farmland, grassland meadows, orchards, to streams, rivers and lakes. It also passes through some areas of housing and through villages packed full of historic architecture and interest.

The route covers a long distance and cannot be walked in a single day, so I have broken it down into seven sections of similar length. I have carefully created this guide with your needs in mind, so you will find contact details of accommodation, pubs and shops on the route, suggestions of good places to stop and rest and useful historical information.

I have also included details of bus services and railway stations, part of the extensive public transport network that Maidstone offers.

It is very important to remember that public footpaths cross over private land; without supportive landowners, this trail couldn't work. Always show respect and don't deviate from the path. No littering, dog waste, barbecues, fires or wild camps anywhere please.

Some short sections of pathway will get muddy during the winter months of course, so I would recommend that mid-March until the end of October is the best time to walk the route.

Please enjoy the trail, discover new places and support local businesses along the way. On the back cover you will find out how my project came about and the people who have given their time and advice to make it happen.

Have a great walk and make lasting memories!

**Phil Riches**

## Where to find public transport timetables...

 Southeastern Railway  
[www.southeasternrailway.co.uk/travel-information/plan-your-journey/timetables](http://www.southeasternrailway.co.uk/travel-information/plan-your-journey/timetables)

Arriva [www.arrivabus.co.uk/kent-and-surrey/bus-travel-in-maidstone](http://www.arrivabus.co.uk/kent-and-surrey/bus-travel-in-maidstone)

Nu-Venture [www.nu-venture.online/bus-times](http://www.nu-venture.online/bus-times)

Stagecoach [www.stagecoachbus.com/timetables](http://www.stagecoachbus.com/timetables)

## Section 1

## West Malling - Watlington

St Leonard's Street

Railway Station



You can catch a train or bus back to Maidstone town centre from Watlington.

 West Malling  From Maidstone Arriva 72 (serves West Malling) Arriva 6 (serves Watlington)	 West Malling Five Pointed Star 01732 842192 The Bull Inn 01732 842753 The Malling Jug 01732 667832  The Farmhouse 01732 843257	 Watlington The Railway 01622 812911 Where Memories Meet 01622 299017 Ramblers Rest 07736 990485	 West Malling Tesco Costa Watlington The Handy Shop	 Manor Park Country Park Warren Woods Nature Reserve
---	---	---	---	---

Scenic Green Trail starts in West Malling at the main entrance gate of Manor Park Country Park, on the left side of St Leonard's Street.

To get here by train, leave the station car park area and walk all the way to the top of Swan Lane and turn left into High Street (this is where bus services also stop too). Walk up to the end of High Street and then left into St Leonard's Street.

From the main entrance, walk to the bottom of the valley, down some wooden steps and over a small bridge. Turn right, then follow the path beside the Ewell stream, with the historic Douces Manor up on your right hand side, until you reach the road bridge.

*(Continue straight ahead here to visit the historic St Leonard's Tower, built by the Normans).*

Turn left and follow the road up through the car park and continue straight on.

*(The country park café and toilets are to your left).*

Pass through a metal kissing gate and continue straight on. After a few minutes of walking, pass through another metal kissing gate to leave the country park, continue straight ahead and cross over A228 West Malling Bypass bridge.

At the end of the bridge turn left and follow the path down the slope and join Public Footpath MR143A on the right. Follow this path through open fields until Broadwater Road, where you turn left and continue straight ahead past some oast houses and cottages.

Turn right at the entrance of Broadwater Farm and join Public Footpath MR113A. Walk straight ahead, being respectful of the farm property until you reach Well Street with several old cottages in view.

Turn right and continue straight ahead along Well Street. Turn left at the junction with The Heath. Continue straight ahead and just past the last house on the right hand side, turn right and join Public Footpath MR115.

Continue straight ahead. The Warren Woods Nature Reserve is directly to your right, with picnic benches and its own path network. Pass Kings Hill Football Club and shortly after, you will reach Teston Road. Turn left here and then turn right almost immediately afterwards to join Public Footpath MR498.

Continue straight ahead, through coppice woodland. Keep to the path and where it forks, keep left.

Descend down the hill, crossing a farm track. The path then runs beside orchards and a few old houses until you reach A26 Tonbridge Road.

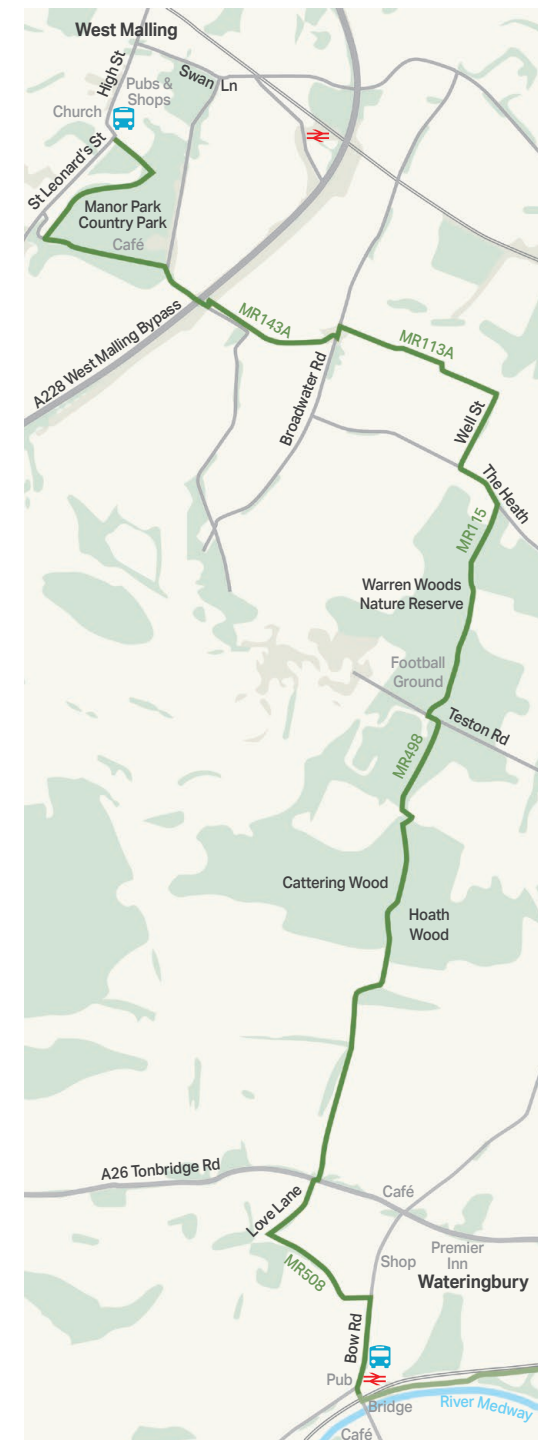
Cross over into Love Lane and continue straight ahead. Turn left to join Public Footpath MR508 opposite Mill Oast House. Continue ahead and around a sharp left bend until you reach B2015 Bow Road in Watlington.

*(To access local shops and café, turn left here. 'The Handy Shop' is close by along this the road to the left and further up at the crossroads is a lovely café called Where Memories Meet and also a Premier Inn).*

Turn right and follow Bow Road until you reach the Grade II listed Watlington railway station on your left, built by South Eastern Railway in 1844.

This is the end of Section 1.

*(The Railway Pub is located directly opposite the station and just over the level crossing and bridge on your right hand side is the Ramblers Rest Café).*





From Wateringbury railway station, walk across the level crossing and take the next left behind the signal box. Join Public Footpath MR511 (this path is also signposted Medway Valley Walk).

Continue straight ahead through the Bow Bridge Marina. Pass through a wooden gate and follow the path along the riverside, passing many boats moored up and a Second World War pill box over on the left side.

Continue to follow the path beside the River Medway, in a while you will pass through a metal kissing gate and onto a section owned by East Farleigh Cruising Club. Please show respect, keep to the path and continue straight ahead.

Pass through a wooden gate into Teston Bridge Country Park and bear right to keep to the path near the riverbank. Pass through another wooden gate and soon you will reach Teston Lock. The remains of Tutsham Mill and a Second World War pill box can be see on the other side of the river here and to your left there is a weir.

*(To access the Lodge Café and toilets, turn left just before the bridge and take the path to the car park. There are also picnic benches here).*

*(To access The Tickled Trout pub/restaurant and accommodation, cross over the bridge and carefully walk up B2163 Teston Lane and turn right).*

Continue straight ahead, under the beautiful 15th Century Teston Bridge and through a metal kissing gate. The path now continues between the railway line and the River Medway. You will cross several bridges over some small streams. You will also pass through several more metal kissing gates and a wooden gate before you reach Barming Bridge.

The path now changes to a hard surface and is named 'Medway Towpath' all the way to Tovil. Pass Barming Bridge and continue straight ahead.

After a while, you can see the 12th Century Church of Saint Mary in East Farleigh, which has a prominent position on top of the hill, then the marina and iconic 14th Century bridge ahead, famed for being the setting for a battle during the English Civil War.

To your left is the Grade II listed East Farleigh station which was built by South Eastern Railway in 1844.



*(Take the short path up on the left just before the bridge to access East Farleigh railway station and The Victory pub. Access to the Church of Saint Mary and The Bull pub involves carefully crossing over the bridge and climbing the steep hill on the other side of the river).*

Continue straight ahead following the river. After a while, you'll pass some house boats. On the opposite side of the river is Bydews Wood. When you reach Tovil Bridge (just before the new riverside apartments), turn left, climb up the slope onto the bridge and turn left again. Cross over into Wharf Road, Tovil.

Continue straight ahead and turn right into Lower Tovil. Continue ahead, then left into Bridgeside Mews and bear left to join Public Footpath KB50. Follow this straight path all the way to Tovil Hill.

*(There are a good choice of shops and a pub in Tovil - Lidl and Tesco are both closeby to your right and Londonis and The Royal Paper Mill pub are up the hill to the left).*

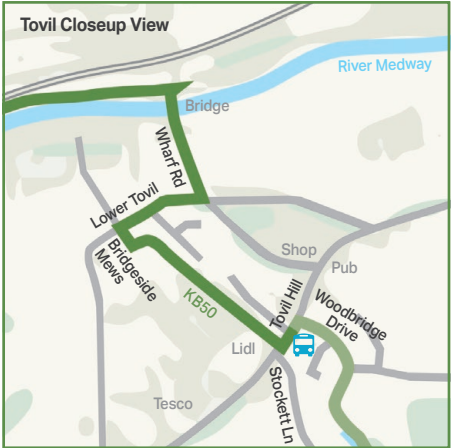
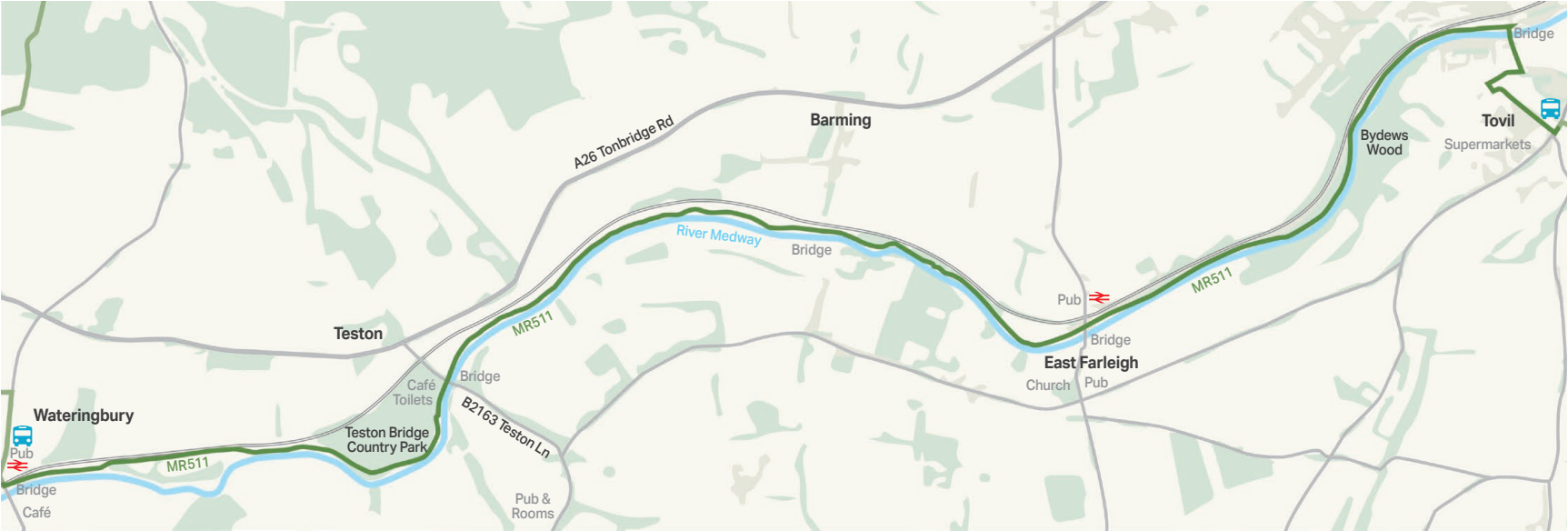
Cross over the road here and walk along to the bus stop. This is the end of Section 2.



Just over half way on Section 2 is the historic village of East Farleigh, with its beautiful medieval bridge.

This is a sensible place to take a break and a great suggestion would be to visit **The Victory pub**, which is located opposite East Farleigh railway station.

This welcoming and dog-friendly pub, offers drinks and light lunches and also boasts a sizeable outdoor seating area and hall. So rest your feet, use the facilities and support a local business!



Section 3

Tovil - Boughton Monchelsea

Tovil Hill   Robson Chase

	 		
From Maidstone	Tovil	Tovil	Hayle Park
Nu-Venture	The Royal Paper Mill 01622 752095	Lidl / Tesco / Londis	Nature Reserve
22 / 23 / 23a / 25 / 26	Loose	Loose	Loose village
(serve Tovil)	The Loose Chequers 01622 743125	Loose Post Office	Linton village
Arriva 5 / 59 Nu-Venture 27	Linton	Boughton Monchelsea	St Peters Church
(serve Loose and Linton)	The Bull 01622 743612	The Store at Boughton	Lyewood
	 Riseden B&B 01622 743811		

From the bus stop on Tovil Hill, turn right into Woodbridge Drive. This housing estate was built on the site of the Alabaster Passmores Paper Mill; paper was one of the important products made in Tovil.

Continue ahead, following the curve of the road and take the path beside the children's play area ahead. Continue beside the stream, then cross it and then left onto Cave Hill. Continue along the pavement and turn left by the brown gate into Hayle Park Nature Reserve.

Continue straight ahead, beside the pond and then join the uphill path edged with a stone wall. You'll climb steps up to the top, then continue to follow the path. The path soon runs parallel to a large field. Continue straight ahead and into the woodland. Continue to follow the path and down some steps, turning left to the entrance opposite Bockingford Lane.

Cross Hayle Mill Road and climb up Bockingford Lane past a few houses before turning left into a narrow road to join Public Footpath KB42. Continue straight ahead and bear left, where the path runs parallel to the stream, past some cottages and then alongside a stone wall.

Pass through a metal kissing gate, bear right and follow the path continues beside the fence and through the valley. You'll pass through several more metal and wooden gates separating several fields. At the last wooden kissing gate, bear left and follow the gravel road all the way round and past some cottages. Turn left at the end of this road (called Kirkwell) and follow the tarmac path along the stream.

*(The 17th Century pub, The Loose Chequers, is to your right here and has a large outdoor seating area. Turn left to access Loose Post Office and shop at the top of Old Loose Hill).*

Turn right onto Old Loose Hill and continue straight ahead. On the right hand side you'll see many of the beautiful old buildings in the village including All Saints Church with its ancient Yew tree that is 1,500 years old, so well worth a visit.

Climb up the hill, past High Banks and turn right to join Public Footpath KM62 on the right (opposite Rosemount Close). Continue straight ahead and at the next junction, turn left and take Public Footpath KM63. Continue to follow the path, you will pass a few farm store buildings. The path then turns right towards a farm. Just before the entrance to the farm property, turn left and follow Public Footpath KM64 around the edge of the orchard until it enters a small woodland.

Continue straight ahead, through the woodland which then becomes a hedge lined path beside a field. At the end of this path, you will join B2163 Heath Road. Turn right briefly and stay on the pavement, passing the new Greensands Health Centre building.


Cross over into Vanity Lane, the next country road on the left and continue straight ahead. When you reach the footbridge, climb up the steps and turn left, crossing back over Vanity Lane and join Public Footpath KM134 (also signposted Greensands Way). Continue straight ahead through orchards. There are wonderful views on the right hand side. You will soon see the small village of Linton in the distance.

The footpath ends at A229 Linton Hill. Turn right and walk down the hill and you will see The Bull Inn pub on the right hand side, which dates from 1674 and boasts beautiful views from its large outside garden and decking areas.

Cross the road at St Nicholas Church and join Public Footpath KM125 (Greensands Way). Carefully proceed through the black church gate, bear right and be respectful as you pass through the Church grounds, keeping to the path.

Continue straight ahead, passing through several metal kissing gates. There are magnificent views of Linton Park and its historic house here. Continue straight ahead to Loddington Lane, be careful of the stone steps leading down to the road.

*(Musket Brewery, tel 01622 749931, is a 5 minute walk to the left here and Loddington Farm Shop, tel 01622 231911, a bit further at the junction with Heath Road).*

 Tovil, Loose, Coxheath, Linton and Boughton Monchelsea are all served by bus services back to Maidstone town centre.



Boughton Monchelsea Amenity Trust

Scenic Green Trail passes through or past Lyewood, Furfield Park and Langley Park Country Park, green spaces managed by our supporters at Boughton Monchelsea Amenity Trust.

Find out more at [bmatkent.org.uk](http://bmatkent.org.uk)

Continue straight ahead through more orchards and the path ends at Church Hill, opposite St Peters.

*(Cross the road to access this historic 15th Century church with its beautiful grounds and views of the deer park).*

Turn left and walk along Church Hill for about 5 minutes, before bearing right to join Public Footpath KM117 which passes coppiced woodland and around the perimeter of Boughton Place.

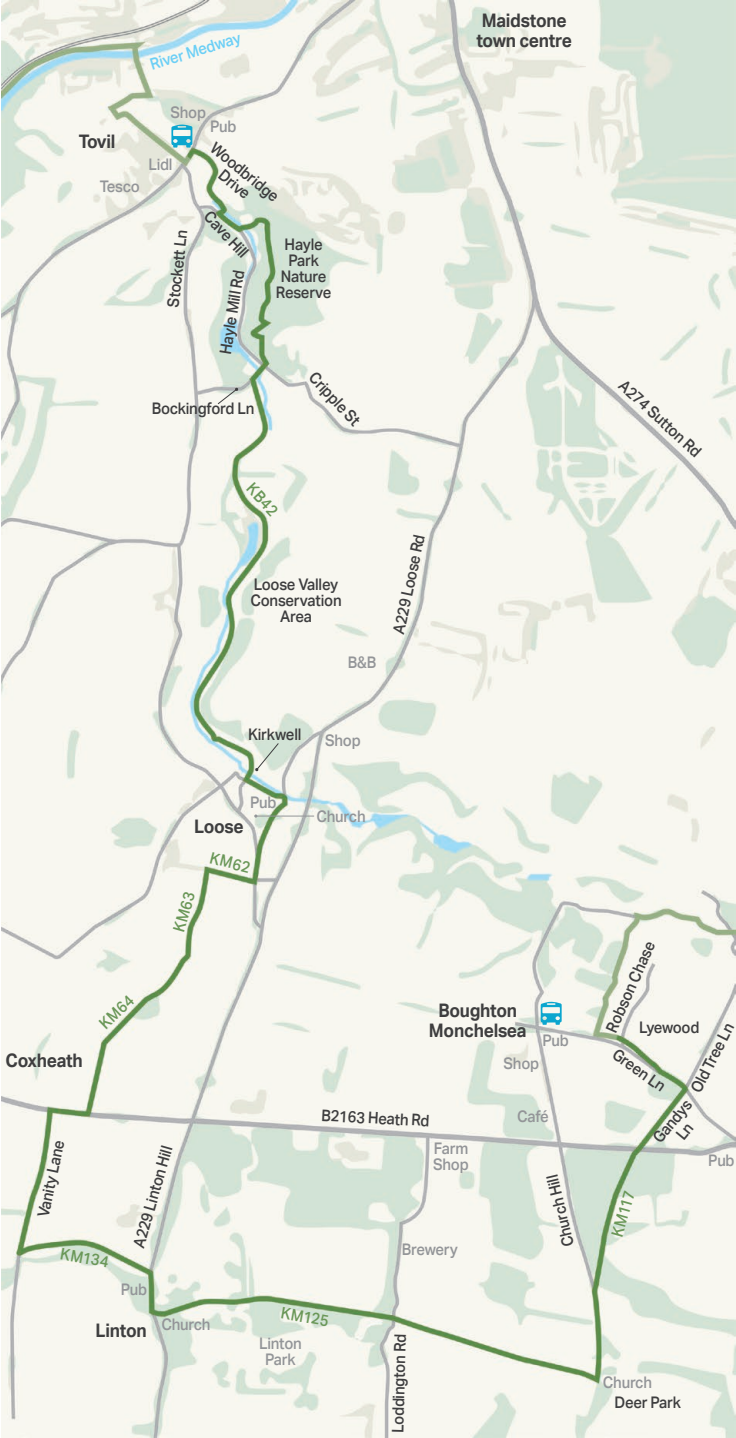
At the end of the path, pass through a small metal kissing gate, cross straight over B2163 Heath Road, into Gandys Lane. Continue straight ahead until you reach the junction with Old Tree Lane and Green Lane.

*(To access the historic pub The Cock Inn which dates from 1568, turn right here and walk along until you reach the end of Green Lane and it is directly opposite).*

Turn left here and after a short distance, pass through the wooden gate on the right hand side of the road into Lyewood and follow the path that runs behind the hedge parallel to Green Lane. There is a bench on the left here.

Cross over Robson Chase and this is the end of Section 3.

*(Continue straight ahead to reach the bus stop, next to the historic pub, The Albion Inn. Turn left into Church Street to access The Store at Boughton local shop and further up, the Bocton Café in the Village Hall).*





 From Maidstone Arriva 59 (serves Boughton Monchelsea)  Arriva 12 (serves Langley)	 Langley The Potting Shed 01622 862112	 Boughton Monchelsea The Albion Inn 01622 299359 The Cock Inn 01622 743166 Langley The Potting Shed 01622 862112 The Coffee Garden	 Boughton Monchelsea The Store at Boughton Langley Park Aldi / Costa Downswood Spires Mini Market	 Lyewood Langley Park Country Park Otham Green Mallards Way Lake Mote Park
---	--	---	--	---

Start at The Albion Inn and continue to walk along Green Lane. Turn left to join Public Footpath KM104A. Continue straight ahead, you will pass over a private driveway, so please keep to the route. Climb carefully down the stone steps and between the old houses to The Quarries.

Turn right here and continue straight ahead past houses and bungalows. At the junction with Old Tree Lane, join Public Footpath KM109 which is directly ahead. Cross over Brishing Lane, through a metal kissing gate and continue straight ahead, with Stream Shaw on your right. Climb down the hill and turn left to join Public Footpath KM115, around the perimeter of Furfield Park.

Climb up and turn right into Brishing Road, a narrow country road. Be aware of occasional traffic. Continue straight ahead. Follow the road as it takes a sharp bend to the right. Continue down Brishing Road and join Public Footpath KH365 with an entrance on the left side, carefully climbing up the stone steps.

Continue on this path which runs along the bottom of Langley Park Country Park. The path now briefly runs parallel to Steam Shaw, then crosses it on a wooden bridge. Once over the bridge, pass through the gate and head towards your left over the field and pass through a metal kissing gate. Follow the path around Langley Loch fishing lake, but stay to the path as this is private property. Once past the lakes, you'll see Langley Church ahead, turn left and join Public Footpath KH369. Climb up the hill to A274 Sutton Road.

*(The Coffee Garden café is straight ahead on New Road within Rumwood Nurseries. Walk for 5 minutes to your right here to access The Potting Shed pub, which has a large outdoor seating area and offers accommodation).*

Turn left and keep on the grass verge until you join the pavement. Continue straight ahead, passing the new Rosewood development roundabout and just before the next roundabout at Langley Park, cross Sutton Road into John Mills Way, joining Public Footpath KM94.

*(Aldi and Costa are located just to the left here).*

Pass through the new Monchelsea Park Estate, and past several stone sculptures. Turn left at the end of the path where it joins the tarmac road, then shortly turn right which is Public Footpath KM88 which runs parallel to the Bearsted Football club site.

*(To access the Bicknor Wood community woodland, walk left opposite the entrance to the football club car park, pass through a wooden gate and keep turning left).*

Continue straight ahead until White Horse Lane (you'll see a closed pub to your right). Turn left and stay on the right hand side of White Horse Lane for a short section, then follow the woodland path into East Wood. In a few minutes, turn right and join Public Footpath KM87 which runs parallel to a field. Continue straight ahead, you'll see the historic Gore Court ahead.

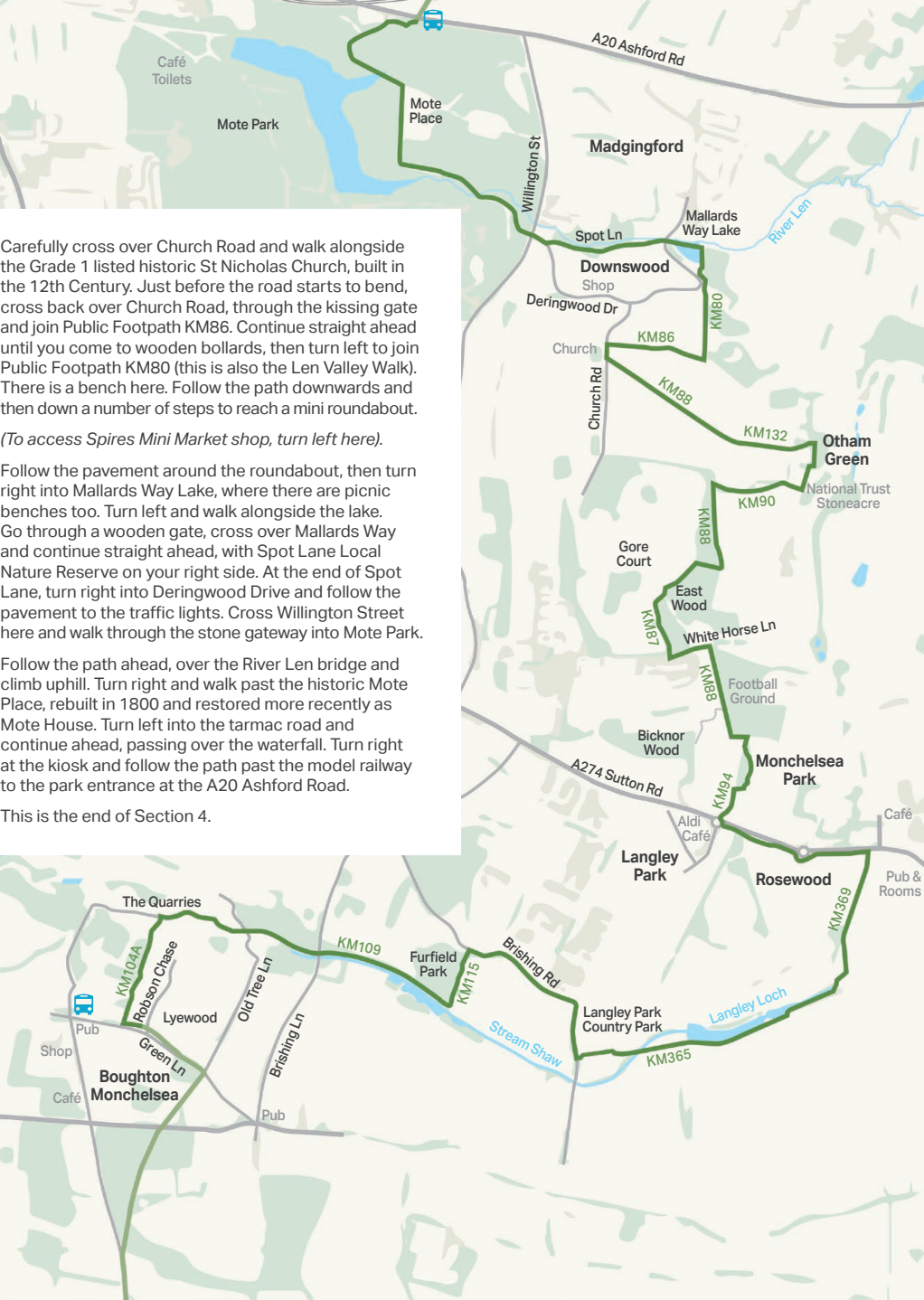
Bear right and follow the path until you soon get to a farm track, turn right here and through the woodland. Then turn left to join Public Footpath KM88 shortly after.

Continue straight ahead, there are horse paddocks to your right side and stables in the distance. The path is narrow in places. You'll see remains of Second World War Nissen Hut foundations in East Wood on your left.

At the end of the path, turn right and join Public Footpath KM90. After a few minutes, pass through a wooden kissing gate and continue ahead past some houses and Otham Manor to Otham Street, a narrow road. Turn left here and walk straight ahead to Otham Green. There are a number of benches here and great views over towards the North Downs.

*(To access National Trust Stoneacre, a 15th Century Yeoman's house and garden, walk down the steep hill beside Otham Green here).*

Walk through Otham Green until you get to the steps on the left. Go up the steps, cross Otham Street and walk straight ahead past some small houses to join Public Footpath KM132/KM88 and over the field to Church Road.



Carefully cross over Church Road and walk alongside the Grade 1 listed historic St Nicholas Church, built in the 12th Century. Just before the road starts to bend, cross back over Church Road, through the kissing gate and join Public Footpath KM86. Continue straight ahead until you come to wooden bollards, then turn left to join Public Footpath KM80 (this is also the Len Valley Walk). There is a bench here. Follow the path downwards and then down a number of steps to reach a mini roundabout.

*(To access Spires Mini Market shop, turn left here).*

Follow the pavement around the roundabout, then turn right into Mallards Way Lake, where there are picnic benches too. Turn left and walk alongside the lake. Go through a wooden gate, cross over Mallards Way and continue straight ahead, with Spot Lane Local Nature Reserve on your right side. At the end of Spot Lane, turn right into Deringwood Drive and follow the pavement to the traffic lights. Cross Willington Street here and walk through the stone gateway into Mote Park.

Follow the path ahead, over the River Len bridge and climb uphill. Turn right and walk past the historic Mote Place, rebuilt in 1800 and restored more recently as Mote House. Turn left into the tarmac road and continue ahead, passing over the waterfall. Turn right at the kiosk and follow the path past the model railway to the park entrance at the A20 Ashford Road.

This is the end of Section 4.









 <b>Hollingbourne</b>  <b>From Maidstone</b> Compaid (serves Detling) Nu-Venture 13/14 (serve Hollingbourne)	 <b>Detling</b> Detling Coach House 01622 737590 <b>Hollingbourne</b> The Windmill 01622 889000	 <b>Detling</b> The Cock Horse 01622 730144 <b>Hollingbourne</b> The Signal Box Café The Windmill 01622 889000 Sugar Loaves 01622 880220	 <b>Detling</b> Detling Community Store	 <b>Hucking Estate</b> All Saints Church
--	---	--	--	--



Starting on The Street, join Pilgrims Way which is opposite the Cock Horse pub. Walk ahead for about 5 minutes, passing Detling Cricket Club. Turn left and join Public Footpath KH68 (also signposted North Downs Way).

Climb upwards then bear right and through a wooden kissing gate. Continue the steep climb upwards and at the crest of the hill, the path runs parallel to the boundary edge of White Horse Wood Country Park. Enjoy the great views here, before climbing down steep wooden steps and through a metal kissing gate.

Follow the path ahead over the grassland and up more steep wooden steps then continue ahead, following the ridgeline.

Pass through another metal kissing gate and turn right to follow Castle Hill downhill for a short distance. The road bends left. Just beside the yellow salt bin on the left side of the road, join Public Footpath KH112 (also signposted North Downs Way).

Pass through several metal kissing gates and continue straight ahead. There are great views to your right here.

Pass through another metal kissing gate and follow the path ahead for a while, it follows the ridgeline and is marked with wooden fencing.

Pass through another metal kissing gate and follow the path as it meanders and then up steep wooden steps into a woodland section.

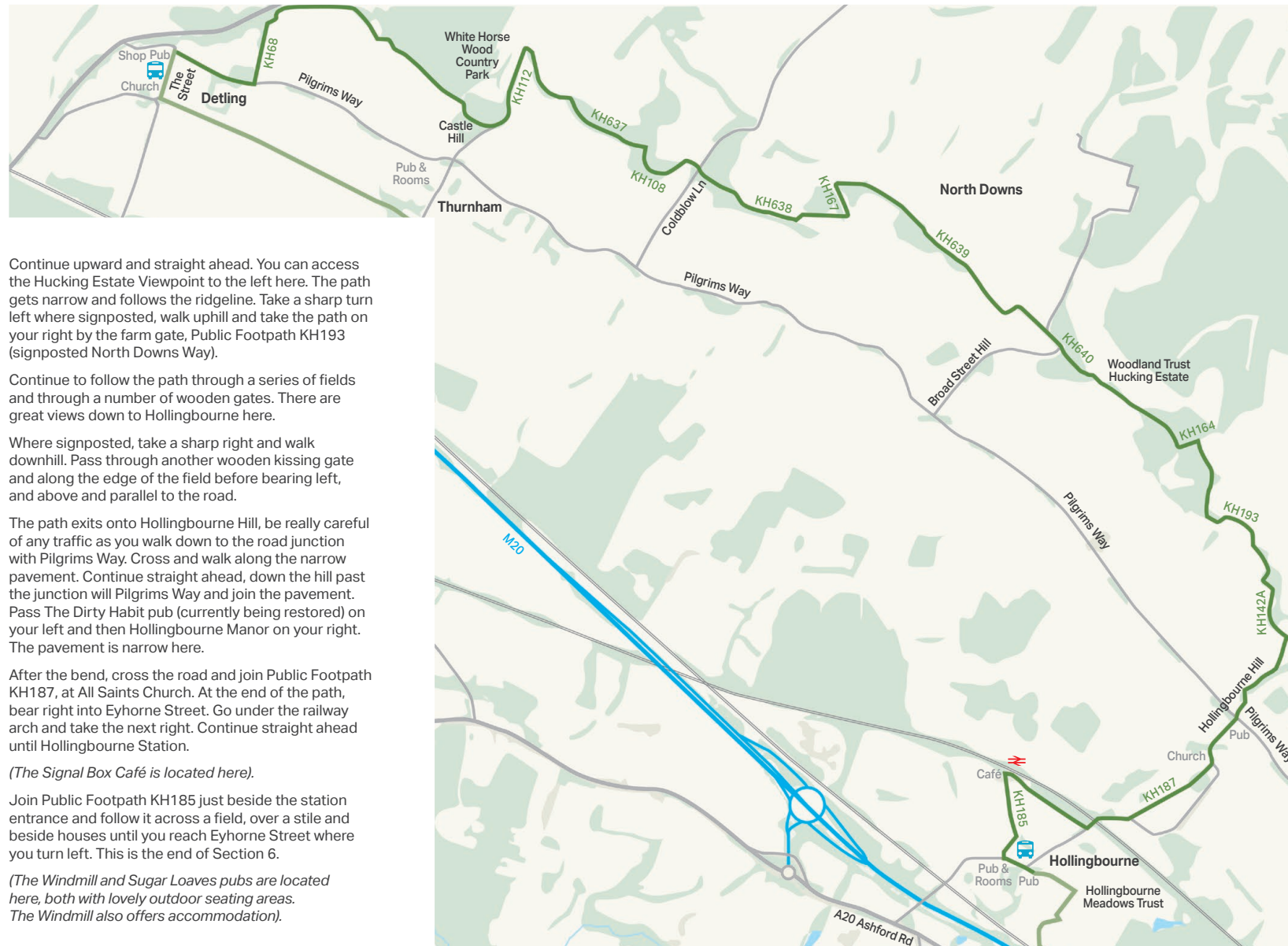
Continue on the path. Where marked, turn right and continue through woodland and later the path runs along the edge of a field. Continue ahead and cross over Coldblow Lane.

Climb up again through more woodland and then back down wooden steps to reach a metal kissing gate, onto grassland to a wooden gate where you take a sharp turn left.

Continue ahead and follow the path as it bends right. You will pass another metal kissing gate and then follow the path over a field bearing left to reach a wooden stile. There are great views here and you can see Leeds Castle in the distance.

Go down a few wooden steps to your right and cross over Broad Street Hill.

*(To access The Woodland Trust's Hucking Estate, turn left here and through a wooden gate).*



Continue upward and straight ahead. You can access the Hucking Estate Viewpoint to the left here. The path gets narrow and follows the ridgeline. Take a sharp turn left where signposted, walk uphill and take the path on your right by the farm gate, Public Footpath KH193 (signposted North Downs Way).

Continue to follow the path through a series of fields and through a number of wooden gates. There are great views down to Hollingbourne here.

Where signposted, take a sharp right and walk downhill. Pass through another wooden kissing gate and along the edge of the field before bearing left, and above and parallel to the road.

The path exits onto Hollingbourne Hill, be really careful of any traffic as you walk down to the road junction with Pilgrims Way. Cross and walk along the narrow pavement. Continue straight ahead, down the hill past the junction will Pilgrims Way and join the pavement. Pass The Dirty Habit pub (currently being restored) on your left and then Hollingbourne Manor on your right. The pavement is narrow here.

After the bend, cross the road and join Public Footpath KH187, at All Saints Church. At the end of the path, bear right into Eythorne Street. Go under the railway arch and take the next right. Continue straight ahead until Hollingbourne Station.

*(The Signal Box Café is located here).*

Join Public Footpath KH185 just beside the station entrance and follow it across a field, over a stile and beside houses until you reach Eythorne Street where you turn left. This is the end of Section 6.

*(The Windmill and Sugar Loaves pubs are located here, both with lovely outdoor seating areas. The Windmill also offers accommodation).*



Continue straight ahead on Eyhorne Street, the pavements are narrow here. Before the road bends sharply left, continue straight ahead, joining Public Footpath KH198, which starts as a limestone driveway. Turn right beside the dog bin, continue ahead between fields and horse paddocks. You will cross 3 stiles. Walk over the railway and the M20 bridges and through a short section of woodland until you reach the A20 Ashford Road. Turn left and follow the pavement straight ahead for a short distance.

Just before the road bends left, carefully cross over to join Public Footpath KH239. You are now entering Leeds Castle property, so please stay to the paths and be respectful. Walk through a short section of woodland and then across Leeds Castle Golf Course, there are yellow marker posts to show the route of the path.

Walk downhill through some woodland, past the weir, round the edge of the pond and through a metal kissing gate. Climb up and continue to walk on the grass around the perimeter of Leeds Castle property. Soon you will see a wooden gate to your right, but continue straight ahead on the grass for about 10 minutes until you reach the narrow tarmac road.

Turn left and follow the road all the way to the car park (Public Footpath KH236A), you will get great views of the 12th century castle to your left. Pass through a wooden gate and straight ahead (a yellow marker post shows the path route here) and downhill over a grass area to a wooden kissing gate. Climb up again on this grass section and follow the bending path over the crest of the bank, with the castle and its mote to your left.

Continue straight ahead, then downhill to pass through a wooden kissing gate into a woodland section. Follow the path through the woodland, crossing a wooden bridge halfway through, until you reach Broomfield Road. Turn right and climb up this road for a few minutes to reach Broomfield village. Turn left at St Margaret Church, joining Public Footpath KH299 (also signposted Len Valley Walk). There is a bench here too.

Carefully proceed through the wooden church gate and follow the path through the graveyard, then pass through a metal kissing gate. Continue straight ahead over the field and then through another metal kissing gate. A path diverged to the right here, but continue straight ahead (Public Footpath KH299).

Follow the edge of the field, with several bends, then bear left through woodland then around the edge of the next field. The path then bears left. Cross over a stile and walk down a slope and then back up again.

Cross over another stile, over Chegworth Road and into a busy farmyard (which also contains some small business units). Please be respectful of this private property and walk through bearing to the right until you reach a narrow concrete road. Continue ahead, there are amazing views of The North Downs on the left here. Continue to follow the road as it takes a sharp left bend, joining Public Footpath KH213, then continue ahead.

Join Public Footpath KH714, the path to the right side of the cottages and then take a sharp bend right. Continue straight ahead, passing a few farms. The path becomes a narrow road, continue straight ahead. Turn right at the junction and join Fairbourne Lane. Continue on Fairbourne Lane for a while, passing the beautiful Fairbourne Mill and uphill until you reach Fairbourne Manor.

Turn left here and join Public Footpath KH285. Pass a number of properties and converted oast houses and then ahead up a slight hill beside an old farm store. Follow the path downhill to the next field. The path cannot be seen well in the field, but it turns slightly to the right, all the way to the strip of trees ahead of you (a wooden post partially painted yellow indicates where the path is at the other end of the field).

Walk downhill and continues ahead, around the boundary edge of the next field. As the path exits the field, it becomes narrow. Continue ahead, through some trees and across Runham Lane. Continue straight ahead, and through a metal gate. Turn sharp left here and walk across the grass field and through another metal gate into woodland. At the end of the woodland, cross over a stile. It is hard to see the route of the path in the next field which has a deep dip in it. Directly ahead of you is Affers Wood.

The path (Public Footpath KH417) runs along the edge of Affers Wood, so climb down the field and back up, then left all the way along the edge of the woodland and cross a stile to enter Affers Wood itself.

Walk ahead through the woods and then over another stile and downhill through the next field. Take the path that forks towards the right. At the bottom of the hill, turn sharp right at the next stile to join Public Footpath KH414A. Continue ahead around the edge and then through the beautiful Stream Wood, which is at the source of the River Len.

Bear left as you exit the woodland and over a grass area (where tree planting has been carried out). You will see houses and bungalows ahead in Platts Heath Village. You will soon reach a stile. Cross over the stile and also Headcorn Road to join Public Footpath KH420. Continue straight ahead, over another stile and diagonally across a grass field, then cross another two more stiles near the farm buildings.

Pass through the wooden gate into Pleasant Forest. Continue ahead, following the path round the field of new tree planting. Cross over another stile and turn sharp left by Lewsome Farm. Continue ahead on the farm road until it joins Boughton Road. Turn left here and continue on Boughton Road. Cross the M20 and the railway line. At the junction with Lenham Heath Road, continue ahead. (Chilston Home Farm / The Wishful Thinker pub are here).

Turn right at the next junction to join Headcorn Road. Follow this road all the way to Lenham railway station, which is on your left. Continue ahead on High Street all the way to Lenham village. Section 7 and the entire Scenic Green Trail ends at The Square.

(Here you can access Lenham's hotels, pubs, cafés and shops and bus stop. Lenham is served by Stagecoach bus 510 from Maidstone and Ashford).

Hollingbourne / Lenham

From Maidstone  
Nu-Venture 13 / 14  
Stagecoach 510  
(serves Lenham)

Hollingbourne

The Windmill 01622 889000

Lenham

The Wishful Thinker 01622 232272  
Chilston Home Farm 07801 639489  
Dog & Bear Hotel 01622 858219

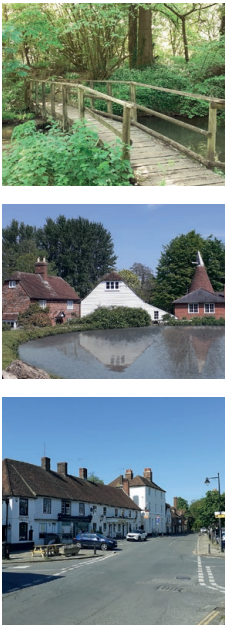
Lenham

The Red Lion 01622 858531  
The Wishful Thinker 01622 232272  
The Bow Window Café 01622 850802  
Cornerhouse Café 01622 851360  
The Square Fish Café 01622 858268

Lenham

Co-op  
Lenham Village Store  
Lenham Farm Shop  
Kent Loves

Hollingbourne Meadows Trust  
Broomfield village  
Pleasant Forest  
Lenham village





# The Story Behind SCENIC GREEN TRAIL

“ Hello, I'm Phil Riches, a Maidstone resident with a keen eye for improving the environment in my home town.

I got really inspired when another local resident devised an amazing plan to turn a neglected ancient woodland close by into a thriving community woodland. After much hard work, it now represents a significant and long-lasting achievement for the area. This gave me the belief that it was actually possible for anyone to change the course of things for the better, to benefit both people and the environment.

I met a number of like-minded people through that project and realised that being outside in nature was having a real benefit to my health. Soon afterwards, I began exploring the local countryside using the public footpath network.

I remember thinking to myself; wouldn't it be better to access other green spaces around the town without walking on busy roads? I studied maps in detail and realised that many of my other favourite country parks and villages around the Maidstone area could be connected by an innovative new route that used somewhat forgotten public footpaths. I set to work, thought up the name and used my graphic design experience to create the logo and branding. It was soon afterwards that I met some visionary people on the Parish Council Environment Network, who loved my idea. Caroline Jessel, Mike Summersgill and Eileen Lewis provided the help needed to get the project taken seriously by local authorities, with Derek Eagle stepping up to become Project Leader.

Scenic Green Trail represents my personal legacy, something new and positive that I have contributed to Maidstone which provides so many benefits to the environment, communities and businesses both for now and in the future. ”



Special thanks to: Louise Riches, Derek Eagle, Caroline Jessel, Eileen Lewis, Mike Summersgill, Caroline Richer, Robert Sagrott, Farris Willson, Gordon Newton, Lisa Ridler, David Munn, Debbie Barton, Jenny Poole, Katie Pattison, Jonathan Leeson, Angela Smith, Kathy Cox, John Edwards, Mark Gracey, Steve Songhurst, Simon Tickle, Warren Curtis, Mike Heydon and everyone who has supported the project.

Information correct at time of  
publishing in Summer 2025